

## STANDARD F

# Quantitative Assays

HbA1c | U-Albumin FIA | PCT FIA | CRP



### ✓ FAST RESULT

- Provide reliable and fast results.  
(HbA1c: 3 mins, U-Albumin FIA: 5 mins, CRP: 3 mins, PCT FIA: 15 mins)

### ✓ USER CONVENIENCE

- Minimize training time with step-by-step instruction on F Analyzer display.
- Require only a small volume of sample.  
(HbA1c: 5  $\mu$ l, U-Albumin FIA: 3  $\mu$ l, CRP: 5  $\mu$ l, PCT FIA: 100  $\mu$ l)

### ✓ ACCURATE TEST RESULTS

- Good correlation with reference method.  
(HbA1c:  $R^2=0.9908$ , U-Albumin FIA:  $R^2=0.9927$ , CRP:  $R^2=0.9744$ , PCT FIA:  $R^2=0.9951$ )

# CHRONIC DISEASE

## STANDARD F

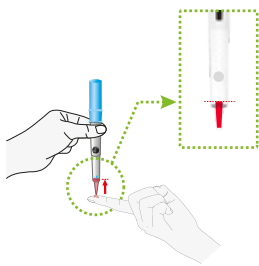
# HbA1c

STANDARD F HbA1c gives you a picture of your long-term diabetes management success.

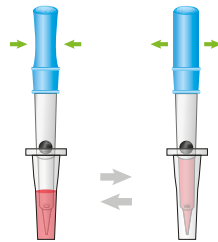
<b>Specimen</b>	Whole blood
<b>Specimen volume</b>	5 $\mu$ l
<b>Testing time</b>	3 mins
<b>Storage condition</b>	2-30 °C
<b>Dynamic range</b>	4.0 - 15.0 % [NGSP]   20.0 - 140.0 mmol/mol [IFCC]
<b>Reference range</b>	$\leq$ 5.6 % (Normal)   5.7 - 6.4 % (Prediabetes)   $\geq$ 6.5 % (Diabetes) 7 % (ADA target for diabetes patients)



### Test procedure

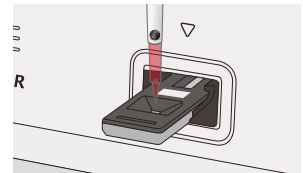


**1** Collect 5  $\mu$ l of blood sample with the spit (provided).



6-8 times mix

**2** Mix the sample with the extraction buffer and collect all the mixture with the spit.



Read  
After 3 mins

**3** Apply the sample mixture at the sample well of the test device.

## STANDARD F

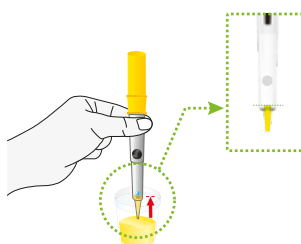
# U-Albumin FIA

STANDARD F U-Albumin FIA can detect early signs of kidney damage especially when you have diabetes.

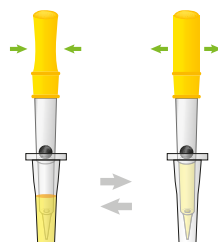
<b>Specimen</b>	Whole blood
<b>Specimen volume</b>	3 $\mu$ l
<b>Testing time</b>	5 mins
<b>Storage condition</b>	2-30 °C
<b>Dynamic range</b>	5.0 - 250.0 mg/L
<b>Reference range</b>	< 20 mg/L (Normal)   20 - 200 mg/L (Microalbuminuria)   > 200 mg/L (Macroalbuminuria or proteinuria)



### Test procedure

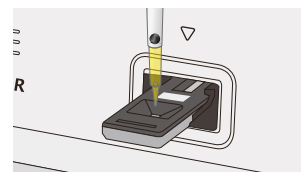


**1** Collect the 3  $\mu$ l of urine sample with the spit (provided).



6-8 times mix

**2** Mix the sample with the extraction buffer and collect all the mixture with the spit.



Read  
After 5 mins

**3** Apply the sample mixture at the sample well of the test device.

STANDARD F

# CRP

STANDARD F CRP helps to differentiate bacterial infection from viral infection.

<b>Specimen</b>	Whole Blood, Serum, Plasma
<b>Specimen volume</b>	5 µl
<b>Testing time</b>	3 mins
<b>Storage condition</b>	2-30 °C
<b>Dynamic range</b>	1 - 150 mg/L (Whole blood)   1 - 130 mg/L (Serum, Plasma)
<b>Reference range</b>	< 10.0 mg/L



Test procedure

**1** Collect 5 µl of blood sample with the spit (provided).

**2** Mix the sample with the extraction buffer and collect all the mixture with the spit.

**3** Apply the sample mixture at the sample well of the test device.

**3** Read After 3 mins

STANDARD F

# PCT FIA

STANDARD F PCT FIA provides guidelines for assessing the severity of systemic bacterial infections and sepsis.

<b>Specimen</b>	Whole Blood, Serum, Plasma
<b>Specimen volume</b>	100 µl
<b>Testing time</b>	15 mins
<b>Storage condition</b>	2-30 °C
<b>Dynamic range</b>	0.05 - 50 ng/mL
<b>Reference range</b>	< 0.5 ng/mL (Sepsis)   < 0.25 ng/mL (LRTI)



Test procedure

**1** Collect 100 µl of specimen and dispense collected specimen into the extraction buffer.

**2** Mix the specimen with the extraction buffer and collect 100 µl the mixture.

**3** Apply 100µl of specimen mixture to the specimen well of the test device.

**15** Read After 15 mins

# ORDERING INFORMATION

## [STANDARD F Analyzers]

Cat. No.	Description	Unit	Printer	Weight	W(mm) / L(mm) / H(mm)
10FA20	F200	1	Built-in	2.5 kg	200 x 240 x 205
10FA24	F2400	1	Built-in	20 kg	510 x 566 x 297

## [STANDARD F Tests]

Cat. No.	Product	Pack size	Storage temperature
10A1C10B	STANDARD F HbA1c	20T	2-30 °C / 36-86 °F
10UAL10B	STANDARD F U-Albumin FIA	20T	2-30 °C / 36-86 °F
10PCT20B	STANDARD F PCT FIA	20T	2-30 °C / 36-86 °F
10CRP10B	STANDARD F CRP	20T	2-30 °C / 36-86 °F
10HSC10B	STANDARD F hs-CRP	20T	2-30 °C / 36-86 °F
10DDI10B	STANDARD F D-dimer FIA	20T	2-30 °C / 36-86 °F
10TNI10B	STANDARD F TnI FIA	20T	2-30 °C / 36-86 °F
10TSH10B	STANDARD F TSH FIA	20T	2-30 °C / 36-86 °F
10BHC10B	STANDARD F β-hCG FIA	20T	2-30 °C / 36-86 °F
10DEN10D	STANDARD F Dengue NS1 Ag FIA	25T	2-30 °C / 36-86 °F
10DEN20D	STANDARD F Dengue IgM/IgG FIA	25T	2-30 °C / 36-86 °F
10COV30D	STANDARD F COVID-19 Ag FIA	25T	2-30 °C / 36-86 °F
10TBF10E	STANDARD F TB-Feron FIA (IFN-gamma)	30T	2-30 °C / 36-86 °F
07TBF10C	STANDARD E TB-Feron ELISA	192 wells	2-8 °C / 36-46 °F
07TBFA30	TB-Feron Tubes 300	Mitogen tube x 100 / TB Ag tube x 100 / Nil tube x 100	2-25 °C / 36-77 °F
07TBFA40	TB-Feron Tube SPP	30 Pcs	2-25 °C / 36-77 °F

## [STANDARD F Controls]

Cat. No.	Product	Pack size	Storage temperature
03ACS10	SDB HbA1c Control	Lv1 x10 / Lv2 x10	2~30 °C
10UALC10	STANDARD F U-Albumin Control	Lv1 x10 / Lv2 x10	2~30 °C
10PCTC20	STANDARD F PCT-02 Control	Lv1 x10 / Lv2 x10	2~30 °C
03CCS10	SDB CRP Control I	Lv1 x10 / Lv2 x10	2~30 °C
10HSCC10	STANDARD F hs-CRP Control	Lv1 x10 / Lv2 x10	2~30 °C
10DDIC10	STANDARD F D-dimer Control	Lv1 x10 / Lv2 x10	2~30 °C
10TNIC10	STANDARD F TnI Control	Lv1 x10 / Lv2 x10	2~30 °C
10TSHC10	STANDARD F TSH Control	Lv1 x10 / Lv2 x10	2~30 °C
10BHCC10	STANDARD F β-hCG Control	Lv1 x10 / Lv2 x10	2~30 °C