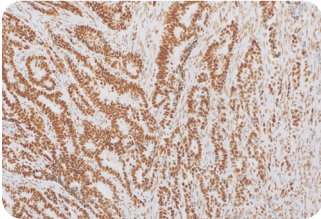
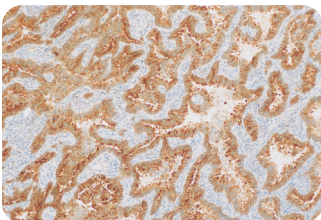


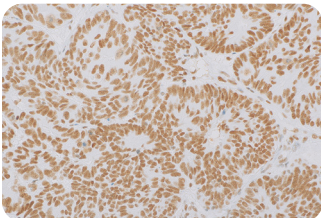
## Cell Marque™ Tissue Diagnostics ARID1A (EP303)



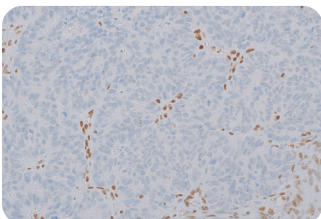
Endometrial carcinoma retaining ARID1A expression



Endometrial carcinoma with loss of ARID1A expression



Colorectal adenocarcinoma with ARID1A expression



Colorectal adenocarcinoma with loss of ARID1A expression

The AT Rich Interactive Domain 1A (SWI-like) tumor suppressor gene encodes BAF250A, a member of the SWI/SNF ATP-dependent chromatin-remodeling complexes. ARID1A is expressed in most normal tissue, and mutations occur in tumors resulting in a loss of expression. ARID1A mutations have been particularly relevant in GI and gynecological malignancies.

In GI tumor pathology, ARID1A loss may be linked to a specific subset of sporadic microsatellite unstable colon cancers that may be medullary phenotype, but is more likely to present with metastatic disease, warranting further investigation with correlation of the MMR panel (MLH1, MSH2, MSH6, PMS2).<sup>1</sup> In gynecological pathology, ARID1A has been found in literature to aid in determining the site of origin of ovarian primary tumors in serous effusions<sup>2</sup> and can determine malignancy of endometrial carcinoma in peritoneal washings<sup>3</sup>. ARID1A immunohistochemistry may be used to subtype ovarian clear cell carcinomas<sup>4</sup> and determine their eligibility for gemcitabine treatments<sup>5</sup>.

### Benefits of Cell Marque™ ARID1A (EP303)

- For *in vitro* diagnostic use
- Helps determine site of ovarian origin in serous cytology
- Helps determine eligibility for targeted therapy in ovarian clear cell carcinomas
- Optimal clone with highest concordance of mutation and protein expression<sup>6</sup>
- Rabbit monoclonal technology
- Compatible with multiple automated platforms

### Intended Use

ARID1A (EP303) Rabbit Monoclonal Primary Antibody is intended for laboratory use in the detection of the ARID1A protein in formalin-fixed, paraffin-embedded tissue stained in qualitative immunohistochemistry (IHC) testing. This product is not a stand-alone diagnostic, and cannot be used for diagnosis, treatment, prevention, or mitigation of disease.

### Ordering Information

Description	Cat. No.
0.1 mL concentrate	407R-14
0.5 mL concentrate	407R-15
1.0 mL concentrate	407R-16
1.0 mL predilute	407R-17
7.0 mL predilute	407R-18

### References

1. Jiqing Ye, et al. Hum Pathol. 2014; 45:2430-6.
2. Ben Davidson, et al. Virchows Arch. 2018; 472:425-432.
3. Zoltan Nagymanyoki, et al. Cancer Cytopathol. 2015; 123:253-7.
4. Jae Yoon Choi, et al. Yonsei Med J. 2017; 58:59-66.
5. Takafumi Kuroda, et al. Gynecol Oncol. 2019; 155:489-498.
6. Saira Khaliq, et al. J Pathol Clin Res. 2018; 4:154-166.

