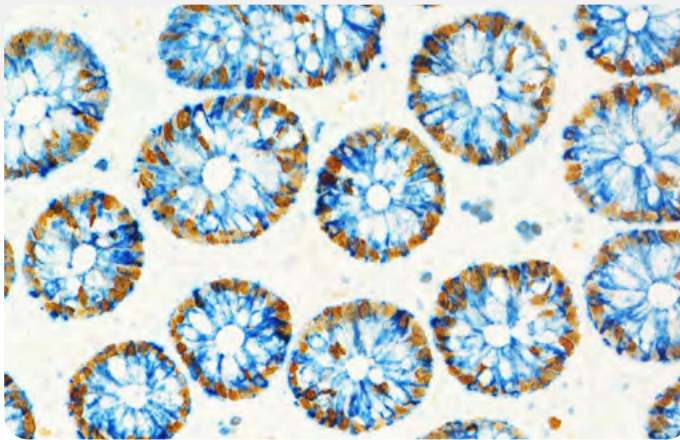


VectaMount® Express

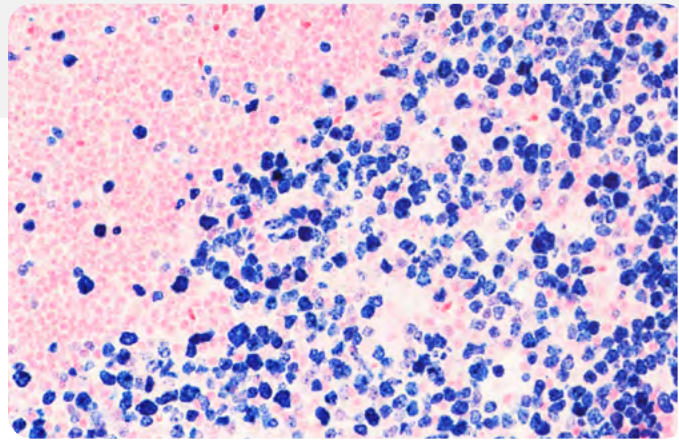
Mounting Medium

Introducing VectaMount Express Mounting Medium

VectaMount Express is a non-aqueous clearing and mounting medium enabling the rapid mounting of cell and tissue specimens following immunohistochemistry (IHC) staining. This novel formulation is engineered to enable mounting directly following staining, saving time by eliminating the need for extensive ethanol and clearing washes prior to coverslipping. Just stain your slides as per your usual workflow, briefly wash in isopropyl alcohol, and coverslip.



Human Colon, double label: Mouse Anti-Ki67, ImmPRESS®-HRP Anti-Mouse IgG, ImmPACT® DAB EqV and Rabbit Anti-Cytokeratin ImmPRESS-AP Anti-Rabbit IgG, Vector® Blue. Mounted in VectaMount Express Mounting Media.



Human Tonsil: Mouse Anti-Ki67, ImmPRESS-AP Anti-Mouse IgG, Vector Blue, Nuclear Fast Red counterstain. Mounted in VectaMount Express Mounting Media.

Faster IHC clearing and mounting

- ✓ Eliminates the need for extensive ethanol washes and solvent-based clearing agents (e.g., xylene)
- ✓ Rapid drying formula for fast visualization of stained samples
- ✓ Preserves staining for at least 18 months at room temperature
- ✓ Compatible with horseradish peroxidase (HRP) and alkaline phosphatase (AP) enzyme substrates
- ✓ Refractive index of 1.49

Product	Unit size	Cat. No.	Format
VectaMount® Express Mounting Medium	60 ml	H-5700	Non-Aqueous

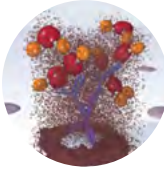
VectaMount Express Mounting Medium

Streamline your IHC workflow

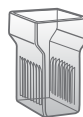
Streamline your IHC workflow with faster clearing and mounting


Traditional Workflow


Stain
Target antigen on tissue section




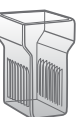
Dehydrate and Clear
Total time 15-30 minutes


70% EtOH 

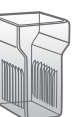
95% EtOH 

95% EtOH 

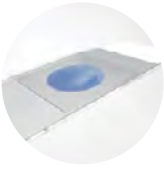
100% EtOH 


100% EtOH 

Xylene 

Xylene 


Mount





 15-30 minutes

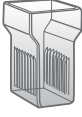
Workflow with VectaMount Express

Stain
Target antigen on tissue section



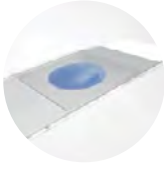
Wash
Total time 2 minutes


100% Isopropanol 

100% Isopropanol 

Save Time >

Mount




 2 minutes

Why VectaMount Express?



Save Time

Stop wasting your valuable time with up to 30 minutes of tedious slide handling through an ethanol dehydration series and xylene clearing prior to coverslipping. Just stain, wash, and mount.



Save Money

Minimize the need for alcohols and xylenes — and the associated disposal costs — in your IHC workflow.



Embrace Sustainability

Reduce laboratory waste by decreasing your dependence on alcohols and xylene for histological-based assays.



Enjoy Convenience

With a mounting workflow that's ready and available when you are, staining is more accessible. Streamline your IHC workflow and get right to your imaging.



Apply with Ease

With an optimal viscosity, this mounting medium enables easy application and uniform spreading.

For more information please visit

vectorlabs.com/vectamountexpress

©2022 Vector Laboratories. All rights reserved.

For research use only. Not intended for animal or human therapeutic or diagnostic use.

ImmPACT, ImmPRESS, VectaMount, and Vector are trademarks of Vector Laboratories, Inc.

LIT3013.Rev00



Distributed by Abacus dx

1800 ABACUS (AUS) 0800 222 170 (NZ) | info@abacusdx.com | www.abacusdx.com

abacus dx