



Unique CE IVDs in FISH & CISH



Your Innovative Probe Design Portfolio

Please check regulatory status in your country



Unique Products of the ZytoLight® Portfolio

Indication	Prod. No.	Product	Label	Tests* (Volume)	
Brain and Neural Tumors	Z-2274-50	ZytoLight SPEC C19MC/19p13 Dual Color Probe CE <input type="checkbox"/> IVD	●/●	5 (50 µl)	
	Z-2273-50	ZytoLight SPEC TERT Dual Color Break Apart Probe CE <input type="checkbox"/> IVD	●/●	5 (50 µl)	
Breast Cancer	Z-2171-200	ZytoLight SPEC BCL2L1/CEN 20 Dual Color Probe CE <input type="checkbox"/> IVD	●/●	20 (200 µl)	
	Z-2190-50/-200	ZytoLight SPEC ERBB2/D17S122 Dual Color Probe CE <input type="checkbox"/> IVD	●/●	5/20 (50/200 µl)	
	Z-2056-200	ZytoLight SPEC ERBB3/CEN 12 Dual Color Probe CE <input type="checkbox"/> IVD	●/●	20 (200 µl)	
	Z-2057-200	ZytoLight SPEC ERBB4/2q11 Dual Color Probe CE <input type="checkbox"/> IVD	●/●	20 (200 µl)	
	Z-2069-50/-200	ZytoLight SPEC ESR1/CEN 6 Dual Color Probe CE <input type="checkbox"/> IVD	●/●	5/20 (50/200 µl)	
	Z-2173-200	ZytoLight SPEC MCL1/1p12 Dual Color Probe CE <input type="checkbox"/> IVD	●/●	20 (200 µl)	
Gastrointestinal Cancer	Z-2189-200	ZytoLight SPEC BRAF Dual Color Break Apart Probe CE <input type="checkbox"/> IVD	●/●	20 (200 µl)	
	Z-2115-200	ZytoLight SPEC KRAS/CEN 12 Dual Color Probe CE <input type="checkbox"/> IVD	●/●	20 (200 µl)	
Lung Cancer	Z-2117-50/-200	ZytoLight SPEC ALK/EML4 TriCheck™ Probe CE <input type="checkbox"/> IVD	●/●/●	5/20 (50/200 µl)	
	Z-2161-200	ZytoLight SPEC ALK/2q11 Dual Color Probe CE <input type="checkbox"/> IVD	●/●	20 (200 µl)	
	Z-2137-50	ZytoLight SPEC CARS Dual Color Break Apart Probe CE <input type="checkbox"/> IVD	●/●	5 (50 µl)	
	Z-2179-50/-200	ZytoLight SPEC CD274,PDCD1LG2/CEN 9 Dual Color Probe CE <input type="checkbox"/> IVD	●/●	5/20 (50/200 µl)	
	Z-2169-200	ZytoLight SPEC FGFR2 Dual Color Break Apart Probe CE <input type="checkbox"/> IVD	●/●	20 (200 µl)	
	Z-2082-200	ZytoLight SPEC FGFR3/4p11 Dual Color Probe CE <input type="checkbox"/> IVD	●/●	20 (200 µl)	
	Z-2131-50	ZytoLight SPEC KIF5B Dual Color Break Apart Probe CE <input type="checkbox"/> IVD	●/●	5 (50 µl)	
	Z-2181-200	ZytoLight SPEC NRG1 Dual Color Break Apart Probe CE <input type="checkbox"/> IVD	●/●	20 (200 µl)	
	Z-2194-200	ZytoLight SPEC NRG1/CD74 TriCheck™ Probe CE <input type="checkbox"/> IVD	●/●/●	20 (200 µl)	
	Z-2167-50/-200	ZytoLight SPEC NTRK1 Dual Color Break Apart Probe CE <input type="checkbox"/> IVD	●/●	5/20 (50/200 µl)	
	Z-2205-50/-200	ZytoLight SPEC NTRK2 Dual Color Break Apart Probe CE <input type="checkbox"/> IVD	●/●	5/20 (50/200 µl)	
	Z-2206-50/-200	ZytoLight SPEC NTRK3 Dual Color Break Apart Probe CE <input type="checkbox"/> IVD	●/●	5/20 (50/200 µl)	
	Z-2278-200	ZytoLight SPEC RICTOR/5q31.1 Dual Color Probe CE <input type="checkbox"/> IVD	●/●	20 (200 µl)	
	Z-2162-200	ZytoLight SPEC ROS1/CEN 6 Dual Color Probe CE <input type="checkbox"/> IVD	●/●	20 (200 µl)	
	Z-2127-200	ZytoLight SPEC SOX2/CEN 3 Dual Color Probe CE <input type="checkbox"/> IVD	●/●	20 (200 µl)	
	Prostate Cancer	Z-2138-200	ZytoLight SPEC ERG Dual Color Break Apart Probe CE <input type="checkbox"/> IVD	●/●	20 (200 µl)
		Z-2135-200	ZytoLight SPEC ERG/TMPRSS2 TriCheck™ Probe CE <input type="checkbox"/> IVD	●/●/●	20 (200 µl)
Renal Cell Carcinoma	Z-2118-200	ZytoLight SPEC CCND1 Break Apart/2q11/CEN 6 Quadruple Color Probe CE <input type="checkbox"/> IVD	●/●/●/●	20 (200 µl)	
	Z-2062-200	ZytoLight SPEC FHIT/CEN 3 Dual Color Probe CE <input type="checkbox"/> IVD	●/●	20 (200 µl)	
	Z-2102-200	ZytoLight SPEC VHL/1p12/CEN 7/17 Quadruple Color Probe CE <input type="checkbox"/> IVD	●/●/●/●	20 (200 µl)	
Z-2084-200	ZytoLight SPEC VHL/CEN 3 Dual Color Probe CE <input type="checkbox"/> IVD	●/●	20 (200 µl)		
Salivary Gland Tumors	Z-2014-50/-200	ZytoLight SPEC MAML2 Dual Color Break Apart Probe CE <input type="checkbox"/> IVD	●/●	5/20 (50/200 µl)	
	Z-2208-200	ZytoLight SPEC NUTM1 Dual Color Break Apart Probe CE <input type="checkbox"/> IVD	●/●	20 (200 µl)	
Sarcoma	Z-2285-50	ZytoLight SPEC CIC Dual Color Break Apart Probe CE <input type="checkbox"/> IVD	●/●	5 (50 µl)	
	Z-2121-200	ZytoLight SPEC COL1A1 Dual Color Break Apart Probe CE <input type="checkbox"/> IVD	●/●	20 (200 µl)	
	Z-2116-50/-200	ZytoLight SPEC COL1A1/PDGFB Dual Color Dual Fusion Probe CE <input type="checkbox"/> IVD	●/●	5/20 (50/200 µl)	
	Z-2183-50	ZytoLight SPEC EWSR1/FLI1 TriCheck™ Probe CE <input type="checkbox"/> IVD	●/●/●	5 (50 µl)	
	Z-2018-50/-200	ZytoLight SPEC FOXO1/PAX3 Dual Color Single Fusion Probe CE <input type="checkbox"/> IVD	●/●	5/20 (50/200 µl)	
	Z-2185-50	ZytoLight SPEC FOXO1/PAX3 TriCheck™ Probe CE <input type="checkbox"/> IVD	●/●/●	5 (50 µl)	
	Z-2019-50/-200	ZytoLight SPEC FOXO1/PAX7 Dual Color Single Fusion Probe CE <input type="checkbox"/> IVD	●/●	5/20 (50/200 µl)	
	Z-2132-50	ZytoLight SPEC JAZF1 Dual Color Break Apart Probe CE <input type="checkbox"/> IVD	●/●	5 (50 µl)	
	Z-2145-50	ZytoLight SPEC NR4A3 Dual Color Break Apart Probe CE <input type="checkbox"/> IVD	●/●	5 (50 µl)	
	Z-2119-50/-200	ZytoLight SPEC PDGFB Dual Color Break Apart Probe CE <input type="checkbox"/> IVD	●/●	5/20 (50/200 µl)	
	Z-2215-50	ZytoLight SPEC PHF1 Dual Color Break Apart Probe CE <input type="checkbox"/> IVD	●/●	5 (50 µl)	
	Z-2178-50	ZytoLight SPEC SMARCB1/22q12 Dual Color Probe CE <input type="checkbox"/> IVD	●/●	5 (50 µl)	
	Z-2184-50	ZytoLight SPEC SS18/SSX1 TriCheck™ Probe CE <input type="checkbox"/> IVD	●/●/●	5 (50 µl)	
	Z-2151-50	ZytoLight SPEC USP6 Dual Color Break Apart Probe CE <input type="checkbox"/> IVD	●/●	5 (50 µl)	
	Z-2195-200	ZytoLight SPEC VEGFA/CEN 6 Dual Color Probe CE <input type="checkbox"/> IVD	●/●	20 (200 µl)	
Z-2142-50	ZytoLight SPEC WT1 Dual Color Break Apart Probe CE <input type="checkbox"/> IVD	●/●	5 (50 µl)		
Z-2212-50	ZytoLight SPEC WWTR1 Dual Color Break Apart Probe CE <input type="checkbox"/> IVD	●/●	5 (50 µl)		
Z-2175-50	ZytoLight SPEC YWHAE Dual Color Break Apart Probe CE <input type="checkbox"/> IVD	●/●	5 (50 µl)		

Unique Products of the ZytoLight® Portfolio

Indication	Prod. No.	Product	Label	Tests* (Volume)
Hematology	Z-2216-50	ZytoLight SPEC 11q gain/loss Triple Color Probe C€ [IVD]	●/●/●	5 (50 µl)
	Z-2199-50	ZytoLight SPEC ABL1 Dual Color Break Apart Probe C€ [IVD]	●/●	5 (50 µl)
	Z-2200-50	ZytoLight SPEC ABL2 Dual Color Break Apart Probe C€ [IVD]	●/●	5 (50 µl)
	Z-2296-50	ZytoLight SPEC ATM/CEN 12 Dual Color Probe C€ [IVD] NEW	●/●	5 (50 µl)
	Z-2174-50	ZytoLight SPEC BCL2/CEN 18 Dual Color Probe C€ [IVD]	●/●	5 (50 µl)
	Z-2267-50	ZytoLight SPEC CREBBP Dual Color Break Apart Probe C€ [IVD]	●/●	5 (50 µl)
	Z-2201-50	ZytoLight SPEC CRLF2 Dual Color Break Apart Probe C€ [IVD]	●/●	5 (50 µl)
	Z-2202-50	ZytoLight SPEC CSF1R Dual Color Break Apart Probe C€ [IVD]	●/●	5 (50 µl)
	Z-2170-50/-200	ZytoLight SPEC FGFR3 Dual Color Break Apart Probe C€ [IVD]	●/●	5/20 (50/200 µl)
	Z-2277-50	ZytoLight SPEC MEF2D/BCL9 TriCheck™ Probe C€ [IVD]	●/●/●	5 (50 µl)
	Z-2143-50/-200	ZytoLight SPEC MYB Dual Color Break Apart Probe C€ [IVD]	●/●	5/20 (50/200 µl)
	Z-2265-50	ZytoLight SPEC NUP214 Dual Color Break Apart Probe C€ [IVD]	●/●	5 (50 µl)
	Z-2291-50	ZytoLight SPEC SPI1 Dual Color Break Apart Probe C€ [IVD]	●/●	5 (50 µl)
	Z-2275-50	ZytoLight SPEC ZNF384 Dual Color Break Apart Probe C€ [IVD]	●/●	5 (50 µl)
	Genetics	Z-2289-50	ZytoLight SPEC DiGeorge Triple Color Probe C€ [IVD] NEW	●/●/●

Related Products	Prod. No.	Product	Tests
	Z-2028-5	ZytoLight FISH-Tissue Implementation Kit C€ [IVD] Incl. Heat Pretreatment Solution Citric, 150 ml; Pepsin Solution, 1 ml; Wash Buffer SSC, 210 ml; 25x Wash Buffer A, 50 ml; DAPI/DuraTect-Solution, 0.2 ml	5
	Z-2028-20	ZytoLight FISH-Tissue Implementation Kit C€ [IVD] Incl. Heat Pretreatment Solution Citric, 500 ml; Pepsin Solution, 4 ml; Wash Buffer SSC, 560 ml; 25x Wash Buffer A, 100 ml; DAPI/DuraTect-Solution, 0.8 ml	20
	Z-2099-20	ZytoLight FISH-Tissue Implementation Kit C€ [IVD] Incl. Cytology Pepsin Solution, 4 ml; 20x Wash Buffer TBS, 50 ml; 10x MgCl ₂ , 50 ml; 10x PBS, 50 ml; Cytology Stringency Wash Buffer SSC, 500 ml; Cytology Wash Buffer SSC, 500 ml; DAPI/DuraTect-Solution, 0.8 ml	20

ZytoLight® Fluorochromes

Two factors that mainly influence FISH analyses:

- Fluorochromes of the FISH probes
- Appropriate filter sets

Fluorochrome	Excitation	Emission	Equivalent to
● ZyBlue™	418 nm	467 nm	DEAC
● ZyGreen™	503 nm	528 nm	FITC
● ZyGold™	532 nm	553 nm	Rhodamine 6G
● ZyOrange™	547 nm	572 nm	Rhodamine
● ZyRed™	580 nm	599 nm	TexasRed®

Recommended Filter Sets

All filter sets have a superior signal-to-noise ratio and need to be assembled in fluorescence filter holders specific for the respective microscope. Please contact info@zytovision.com for more information.

Prod. No	Product	Detected Fluorochrome
E-4030-1	DAPI Single Bandpass Filter Set v2	DAPI
E-4026-1	ZyBlue™ Single Bandpass Filter Set v2	●
E-4012-1	ZyGreen™ Single Bandpass Filter Set v2	●
E-4027-1	ZyGold™ Single Bandpass Filter Set v2	●
E-4013-1	ZyOrange™ Single Bandpass Filter Set v2	●
E-4017-1	ZyRed™ Single Bandpass Filter Set v2	●
E-4016-1	ZyGreen™/ZyOrange™ Dual Bandpass Filter Set v2	●/●
E-4010-1	DAPI/ZyGreen™/ZyOrange™ Triple Bandpass Filter Set	DAPI/●/●
E-4028-1	ZyBlue™/ZyGreen™/ZyOrange™ Triple Bandpass Filter Set	●/●/●

Unique Products of the FlexISH® Portfolio

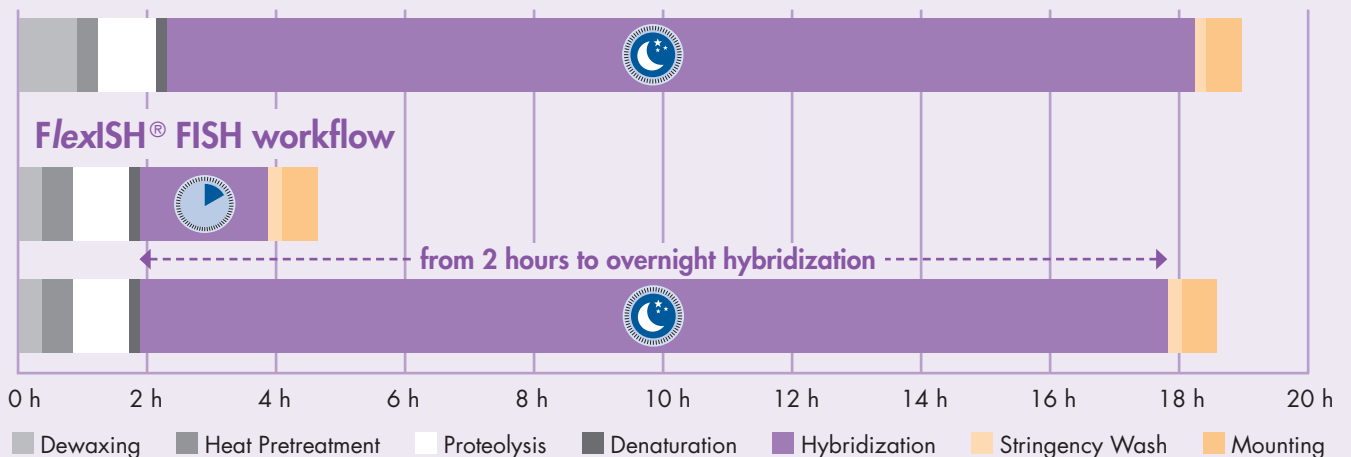
Indication	Prod. No.	Product	Label	Tests* (Volume)
Breast Cancer	Z-2166-50/-200	FlexISH ERBB2/CEN 17 Dual Color Probe C€	●/●	5/20 (50/200 µl)
Lung Cancer	Z-2203-50/-200	FlexISH ALK/ROS1 DistinguISH™ Probe C€	●/●/●	5/20 (50/200 µl)
	Z-2269-50/-200	FlexISH RET/KIF5B TriCheck™ Probe C€	●/●/●	5/20 (50/200 µl)
Hematology	Z-2283-50/-200	FlexISH BCL2/BCL6 DistinguISH™ Probe C€	●/●/●	5/20 (50/200 µl)

Related Products	Prod. No.	Product	Tests
	Z-2182-5	FlexISH FISH-Tissue Implementation Kit C€ Incl. Heat Pretreatment Solution Citric, 150 ml; Pepsin Solution, 1 ml; 5x FlexISH Wash Buffer, 150 ml; DAPI/DuraTect-Solution, 0.2 ml	5
	Z-2182-20	FlexISH FISH-Tissue Implementation Kit C€ Incl. Heat Pretreatment Solution Citric, 500 ml; Pepsin Solution, 4 ml; 5x FlexISH Wash Buffer, 500 ml; DAPI/DuraTect-Solution, 0.8 ml	20
	Z-2099-20	ZytoLight FISH-Tissue Implementation Kit C€ Incl. Cytology Pepsin Solution, 4 ml; 20x Wash Buffer TBS, 50 ml; 10x MgCl ₂ , 50 ml; 10x PBS, 50 ml; Cytology Stringency Wash Buffer SSC, 500 ml; Cytology Wash Buffer SSC, 500 ml; DAPI/DuraTect-Solution, 0.8 ml	20

FlexISH® – Reliable FISH Results obtainable in 1 Day!

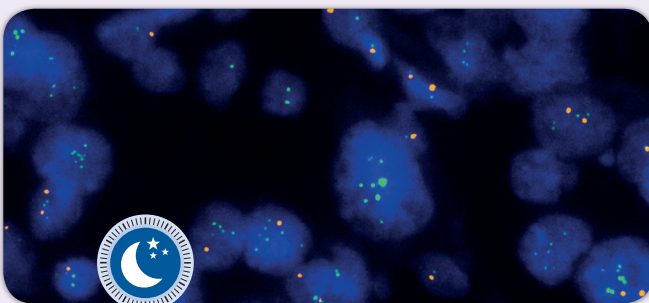
With the use of the **FlexISH® probes** in combination with the **FlexISH® FISH-Tissue Implementation Kit** reliable results can be obtained already within **4.5 hours**. The **FlexISH® protocol** can also be incorporated into the routine workflow with overnight hybridization providing the highest flexibility.

Standard FISH workflow

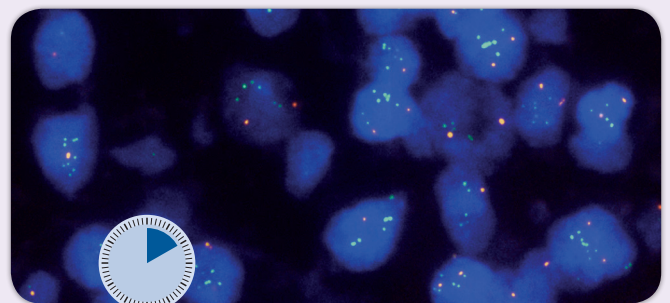


High-Quality FISH Results with flexible Hybridization Time

There is an excellent correlation between the FISH results obtained after overnight and short hybridization periods with regard to signal brightness, signal-to-noise ratio, and the diagnostic result¹.



Hybridization time: Overnight FlexISH® ERBB2/CEN 17 Dual Color Probe



Hybridization time: 120 min FlexISH® ERBB2/CEN 17 Dual Color Probe

Unique Products of the ZytoDot® 2C Portfolio

Indication	Prod. No.	Product	Label	Tests* (Volume)
Brain and Neural Tumors	C-3036-100/-400	ZytoDot 2C SPEC 1p36/1q25 Probe C€ <input type="checkbox"/> IVD	DNP/DIG	10/40 (100/400 µl)
	C-3037-100/-400	ZytoDot 2C SPEC 19q13/19p13 Probe C€ <input type="checkbox"/> IVD	DNP/DIG	10/40 (100/400 µl)
	C-3076-10/-40	ZytoDot 2C Glioma 1p/19q Probe Set C€ <input type="checkbox"/> IVD Incl. ZytoDot 2C SPEC 1p36/1q25 Probe, 0.1 ml/0.4 ml; ZytoDot 2C SPEC 19q13/19p13 Probe, 0.1 ml/0.4 ml	DNP/DIG	10/40
Breast Cancer	C-3067-400	ZytoDot 2C SPEC CDKN2A/CEN 9 Probe C€ <input type="checkbox"/> IVD	DIG/DNP	40 (400 µl)
	C-3068-100	ZytoDot 2C SPEC ERBB2/D17S122 Probe C€ <input type="checkbox"/> IVD	DIG/DNP	10 (100 µl)
	C-3050-400	ZytoDot 2C SPEC FGFR1/CEN 8 Probe C€ <input type="checkbox"/> IVD	DIG/DNP	40 (400 µl)
	C-3056-400	ZytoDot 2C SPEC FGFR2/CEN 10 Probe C€ <input type="checkbox"/> IVD	DIG/DNP	40 (400 µl)
	C-3040-400	ZytoDot 2C SPEC TOP2A/CEN 17 Probe C€ <input type="checkbox"/> IVD	DIG/DNP	40 (400 µl)
Lung Cancer	C-3055-100/-400	ZytoDot 2C SPEC ALK Break Apart Probe C€ <input type="checkbox"/> IVD	DIG/DNP	10/40 (100/400 µl)
	C-3033-100/-400	ZytoDot 2C SPEC EGFR/CEN 7 Probe C€ <input type="checkbox"/> IVD	DIG/DNP	10/40 (100/400 µl)
	C-3059-400	ZytoDot 2C SPEC EML4 Break Apart Probe C€ <input type="checkbox"/> IVD	DIG/DNP	40 (400 µl)
	C-3057-400	ZytoDot 2C SPEC MET/CEN 7 Probe C€ <input type="checkbox"/> IVD	DIG/DNP	40 (400 µl)
	C-3064-100/-400	ZytoDot 2C SPEC RET Break Apart Probe C€ <input type="checkbox"/> IVD	DIG/DNP	10/40 (100/400 µl)
Prostate Cancer	C-3063-100/-400	ZytoDot 2C SPEC ROS1 Break Apart Probe C€ <input type="checkbox"/> IVD	DIG/DNP	10/40 (100/400 µl)
	C-3058-400	ZytoDot 2C SPEC ERG Break Apart Probe C€ <input type="checkbox"/> IVD	DIG/DNP	40 (400 µl)
	C-3053-400	ZytoDot 2C SPEC PTEN/CEN 10 Probe C€ <input type="checkbox"/> IVD	DIG/DNP	40 (400 µl)
Sarcoma	C-3062-400	ZytoDot 2C SPEC CDK4/CEN 12 Probe C€ <input type="checkbox"/> IVD	DIG/DNP	40 (400 µl)
	C-3047-100	ZytoDot 2C SPEC DDIT3 Break Apart Probe C€ <input type="checkbox"/> IVD	DIG/DNP	10 (100 µl)
	C-3043-100	ZytoDot 2C SPEC EWSR1 Break Apart Probe C€ <input type="checkbox"/> IVD	DIG/DNP	10 (100 µl)
	C-3065-100	ZytoDot 2C SPEC FOXO1 Break Apart Probe C€ <input type="checkbox"/> IVD	DIG/DNP	10 (100 µl)
	C-3054-100	ZytoDot 2C SPEC FUS Break Apart Probe C€ <input type="checkbox"/> IVD	DIG/DNP	10 (100 µl)
	C-3049-100/-400	ZytoDot 2C SPEC MDM2/CEN 12 Probe C€ <input type="checkbox"/> IVD	DIG/DNP	10/40 (100/400 µl)
	C-3046-100	ZytoDot 2C SPEC SS18 Break Apart Probe C€ <input type="checkbox"/> IVD	DIG/DNP	10 (100 µl)
Hematology	C-3077-100	ZytoDot 2C SPEC USP6 Break Apart Probe C€ <input type="checkbox"/> IVD NEW	DIG/DNP	10 (100 µl)
	C-3073-100	ZytoDot 2C SPEC BCL2 Break Apart Probe C€ <input type="checkbox"/> IVD	DIG/DNP	10 (100 µl)
	C-3074-100	ZytoDot 2C SPEC BCL6 Break Apart Probe C€ <input type="checkbox"/> IVD	DIG/DNP	10 (100 µl)
	C-3075-100	ZytoDot 2C SPEC CCND1 Break Apart Probe C€ <input type="checkbox"/> IVD	DIG/DNP	10 (100 µl)
	C-3071-100	ZytoDot 2C SPEC IGH Break Apart Probe C€ <input type="checkbox"/> IVD	DIG/DNP	10 (100 µl)
	C-3072-100	ZytoDot 2C SPEC MALT1 Break Apart Probe C€ <input type="checkbox"/> IVD	DIG/DNP	10 (100 µl)
	C-3066-400	ZytoDot 2C SPEC MYC Break Apart Probe C€ <input type="checkbox"/> IVD	DIG/DNP	40 (400 µl)
Genetics	C-3048-400	ZytoDot 2C CEN X/Y Probe C€ <input type="checkbox"/> IVD	DNP/DIG	40 (400 µl)

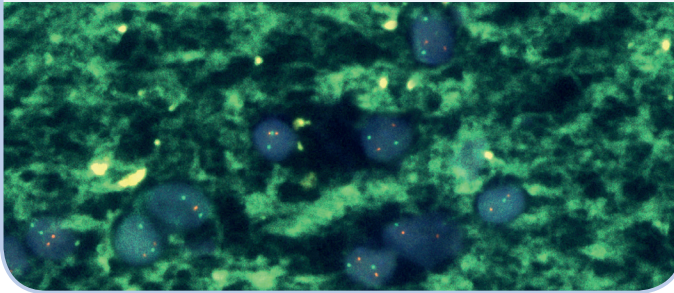


Related Products	Prod. No.	Product	Tests
	C-3044-10	ZytoDot 2C CISH Implementation Kit C€ <input type="checkbox"/> IVD Incl. Heat Pretreatment Solution EDTA, 150 ml; Pepsin Solution, 1 ml; Wash Buffer SSC, 210 ml; 20x Wash Buffer TBS, 50 ml; Anti-DIG/DNP-Mix, 1 ml; HRP/AP-Polymer-Mix, 1 ml; AP-Red Solution A, 0.1 ml; AP-Red Solution B, 4 ml; HRP-Green Solution A, 0.2 ml; HRP-Green Solution B, 4 ml; Nuclear Blue Solution, 4 ml; Mounting Solution (alcoholic), 1 ml	10
	C-3044-40	ZytoDot 2C CISH Implementation Kit C€ <input type="checkbox"/> IVD Incl. Heat Pretreatment Solution EDTA, 500 ml; Pepsin Solution, 4 ml; Wash Buffer SSC, 560 ml; 20x Wash Buffer TBS, 2x 50 ml; Anti-DIG/DNP-Mix, 4 ml; HRP/AP-Polymer-Mix, 4 ml; AP-Red Solution A, 0.4 ml; AP-Red Solution B, 15 ml; HRP-Green Solution A, 0.8 ml; HRP-Green Solution B, 15 ml; Nuclear Blue Solution, 20 ml; Mounting Solution (alcoholic), 4 ml	40

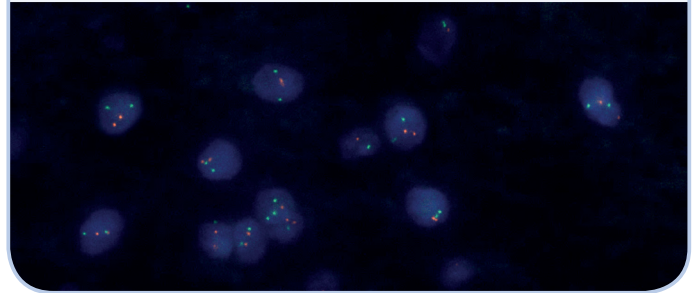
ZyBlack™ Quenching Solution reduces Autofluorescence

Several types of tissue tend to emit intense autofluorescence, including brain, making it difficult to evaluate FISH results. **ZyBlack™ Quenching Solution** is a ready-to-use solution that reduces autofluorescence without adversely affecting tissue integrity or specific fluorescence signals. It can be easily incorporated into the FISH protocol by applying it after the proteolytic pretreatment.

Without ZyBlack™ Quenching Solution



With ZyBlack™ Quenching Solution

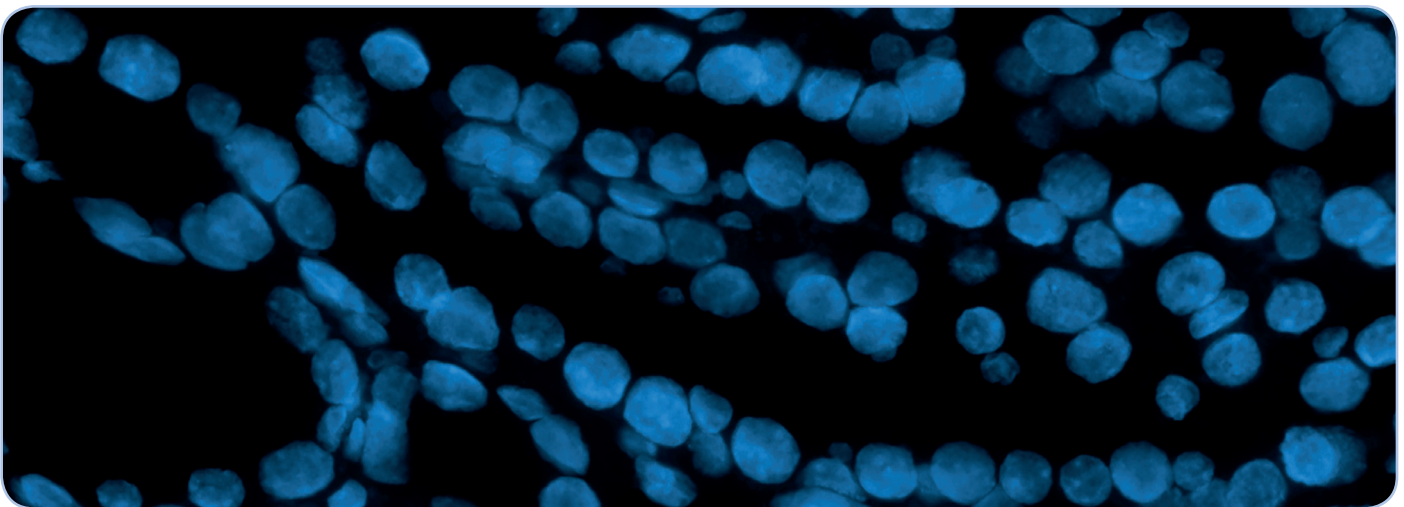


Brain tissue section hybridized with the Zytolight® SPEC 1p36/1q25 Dual Color Probe.

Prod. No.	Product	Volume
BS-0002-8	ZyBlack™ Quenching Solution C€ IVD	8 ml

DAPI/DuraTect™ – Solutions preserve Fluorescence Signals

ZytoVision's DAPI/Antifade Mounting Solutions are optimized to use on tissue or cell specimens and prevent permanent loss of fluorescence and protect fluorescent dyes from photobleaching during fluorescence microscopy.



Prod. No.	Product	Concentration	Storage Temperature	Description
MT-0007-0.8	DAPI/DuraTect™-Solution, 0.8 ml C€ IVD	150 ng DAPI/ml	2...8°C	<ul style="list-style-type: none"> Best overall signal protection Superior signal stability of mounted tissue sections (≤3 months at 2...21°C)
MT-0008-0.8	DAPI/DuraTect™-Solution (ultra), 0.8 ml C€ IVD	1360 ng DAPI/ml	2...8°C	<ul style="list-style-type: none"> Best overall signal protection Superior signal stability of mounted tissue sections (≤3 months at 2...21°C) Recommended when a more intense DAPI stain is desired

* Using 10 µl probe solution per test. C€ IVD only available in certain countries. All other countries research use only! Please contact your local dealer for more information. Based on publicly available data given on e.g. webpages of the companies CytoCell, Dako/Agilent, Kretech/Leica, Ventana/Roche, Vysis/Abbott Molecular. Only CE IVD products were considered for the comparative analysis.